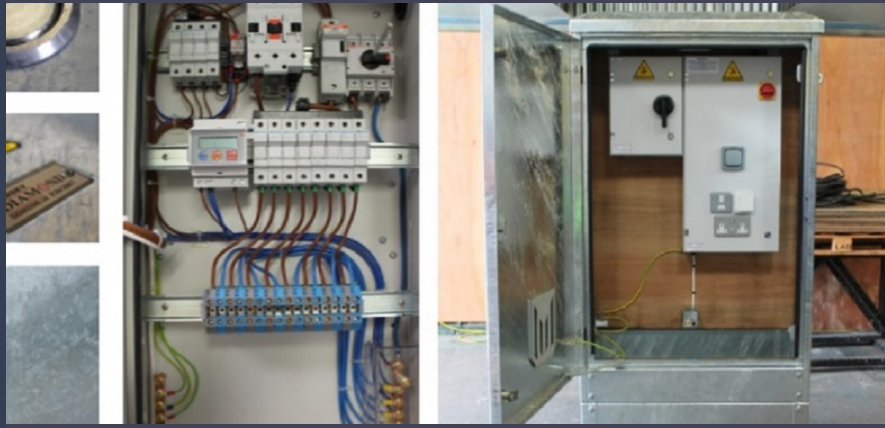


**Feeder Pillars**  
**Electrical Enclosures**  
**Cut-Out Boxes**  
**Prewired Options**  
**Bespoke Options**



**Pudsey Diamond Engineering Limited**

[www.pudseydiamond.com](http://www.pudseydiamond.com)

[sales@pudseydiamond.com](mailto:sales@pudseydiamond.com)

**Tel: 01264 336 677**

**Pudsey Diamond Engineering Limited** set the standard in Feeder Pillar Design. Our extensive range of Feeder Pillars are manufactured to the highest standards and meet all industry regulations.

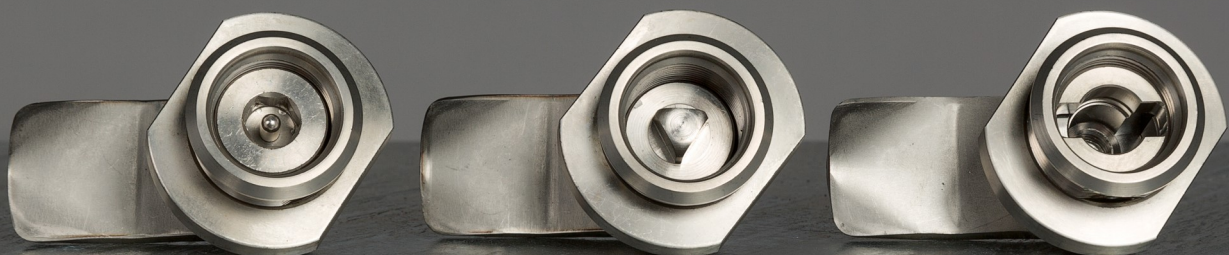
We have been supplying the Street Lighting and Highways Infrastructure Industry for over 30 years and our range provides for flexibility and reliability to ensure the perfect solution. We also offer bespoke solutions that are tailored to your own specifications.

Expertly engineered by our highly experienced team and manufactured in our Andover factory with the precision, care and quality control all under one roof that has ensured our unparalleled longevity and performance. Specially tailored to each customer's unique specification, Pudsey Diamond's pre-wired pillars ensure a reliable and straight-forward installation.

So, whether you require a different size or shape of feeder pillar, additional options such as hasp and staple, special labels or different paint finishes, our in-house design and engineering teams can create bespoke pillars to your exact specifications.

#### Options include:

- 2100 Series – 3mm Slimline Traffic Pillars
- 2200 Series – 3mm Traffic Pillars
- 2300 Series – 3mm Feeder Pillars
- 2500 Series – 5mm Feeder Pillars
- 2600 Series – 3mm Stainless Steel
- Heritage Pillars
- Aluminium Wall Boxes
- Recessed Wall Boxes
- GRP Box Range
- Market Trader Pillars
- Bespoke & Prewired





# 3mm

## 2100 Series

**2100 Series Traffic Pillar** - Our slimline 3mm pillars with lift-off door pillars are ideal for remote isolation of small circuits such as traffic island, roundabouts and bollards. These pillars are compact and sturdy, with anti-rotation lift-off doors and hot dipped galvanised corrosion protection.

Nominal Backboard Dimensions mm (W x H)			Lift Off Door	Cylindrical Pillar
			150 x 550	100 X 450
Product Number	Galvanised	Tri Head	2150	2140
		Anti Vandal	2150AV	2140AV
Specification	Internal Depth mm		130	77
	External Width mm		175	140
	External Height mm		700	700
	External Depth mm		160	140
	Root Depth mm		300	300
	Aperture Dimensions mm (W x H)		130 x 550	110 x 490
	Nom Weight (Kg)		16.5	14.5



### Features:

- 3mm S235 graded mild steel
- Hot dip galvanised to BS EN ISO 1461:2009
- Precision lasered
- Compact design
- Bolted construction
- Fully accessible door aperture
- Water tight gasket seals to IP65
- Integral galvanised root
- Fitted warning signs
- Earth fly lead
- 11mm treated wooden backboard



### Wrap around feeder pillar

Add more capacity to your existing columns with our wrap around feeder pillar. Available in multiple sizes and finishes



# 2200 Series

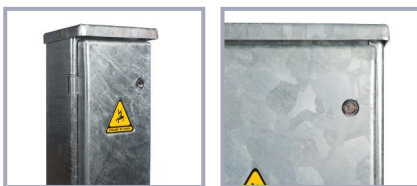
3mm

**2200 Series Traffic Pillars** - Our budget range of 3mm steel feeder pillars are galvanised to BS EN ISO 1461. They are available in a range of sizes, the smallest being suitable for single service isolation; the largest is suitable for multi service or TPN isolations

Nominal Backboard Dimensions mm (W x H)			Hinged Door Single Lock		Hinged Door Double Lock				
			220 x 300	300 x 300	220 x 500	300 x 600	400 x 700	500 x 800	600 x 900
Product Number	Galvanised	Tri Head	2256	2255	2250	2251	2252	2253	2254
		Anti Vandal	2256AV	2255AV	2250AV	2251AV	2252AV	2253AV	2254AV
Specification	Internal Depth mm		120	120	120	170	190	220	260
	External Width mm		250	330	250	330	430	530	630
	External Height mm		475	475	680	780	880	980	1080
	External Depth mm		155	155	155	205	225	255	295
	Root Depth mm		300	300	300	300	300	300	300
	Aperture Dimensions mm (W x H)		170 x 300	250 x 300	170 x 500	250 x 600	350 x 700	450 x 800	550 x 900
	Nom Weight (Kg)		18.5	19.5	19.5	28	37	51	65

## Features:

- 3mm S235 graded mild steel
- Hot dip galvanised to BS EN ISO 1461:2009
- Precision lasered
- Compact design
- Bolted construction
- Fully accessible door aperture
- Water tight gasket seals to IP65
- Integral galvanised root
- Fitted warning signs
- Earth fly lead
- 11mm treated wooden backboard



# 2300 Series

3mm

**2300 Series Feeder Pillars** - Our high specification 3mm feeder pillars have an excellent level of resistance to vandalism. With a range of sizes for both single door and double door, these are suitable for many applications including trunk road and motorway installations.

Nominal Backboard Dimensions mm (W x H)			Single Door					Double Door	
			300 x 600	400 x 700	500 x 800	600 x 900	750 x 1050	900 x 1200	1050 x 1200
Product Number	Galvanised	Tri Head	2300	2310	2320	2330	2340	2350	2360
		Lucy Type	2301	2311	2321	2331	2341	2351	2361
		Anti Vandal	2304	2314	2324	2334	2344	2354	2364
	Painted Grey 18B25	Tri Head	2302	2312	2322	2332	2342	2352	2362
		Lucy Type	2303	2313	2323	2333	2343	2353	2363
		Anti Vandal	2306	2316	2326	2336	2346	2356	2366
	Painted Black 00E53	Tri Head	2300BL	2310BL	2320BL	2330BL	2340BL	2350BL	2360BL
		Lucy Type	2301BL	2311BL	2321BL	2331BL	2341BL	2351BL	2361BL
		Anti Vandal	2304BL	2314BL	2324BL	2334BL	2344BL	2354BL	2364BL
Specification	Max Internal Depth mm		170	190	220	260	260	320	320
	Min Internal Depth* mm		130	150	180	220	220	280	280
	External Width mm		360	460	560	660	810	1050	1250
	External Height mm		830	930	1030	1130	1280	1500	1500
	External Depth mm		215	235	265	305	305	450	450
	Root Depth mm		300	300	300	300	300	400	400
	Aperture Dimensions mm (W x H)		250 x 600	350 x 700	450 x 800	550 x 900	700 x 1050	850 x 1200	1000 x 1200
	Nom Weight (Kg)		38	51	65	80	95	185	210

## Features:

- 3mm S235 graded mild steel
- Hot dip galvanised to BS EN ISO 1461:2009
- Precision lasered
- Welded construction
- Fully accessible door aperture
- Stainless steel locks
- Integral galvanised root
- Quality phosphor bronze hinges
- Designed to ingress protection IP54
- Water tight gasket door seal to IP65
- In built ventilation system
- Document pocket
- Fitted warning signs
- Earth fly lead
- 12mm treated backboard





# 5mm

## 2500 Series

**2500 Series Feeder Pillars** - Our high specification 5mm feeder pillar with an excellent level of resistance to vandalism. There is a range of sizes for both single door and double door, these are suitable for many applications including trunk road and motorway installations.

### Features:

- 5mm S235 graded mild steel
- Hot dip galvanised to BS EN ISO 1461:2009
- Precision lasered
- Welded construction
- Fully accessible door aperture
- Stainless steel locks
- Integral hasp and staple
- Door stay
- Bolt on galvanised root
- Quality phosphor bronze hinges
- Designed to ingress protection IP54
- Water tight gasket door seal to IP65
- In built ventilation system
- Document pocket
- Fitted warning signs
- Earth fly lead
- 18mm treated backboard



Nominal Backboard Dimensions mm (W x H)			Single Door				Double Door					
			500 x 800	600 x 900	750 x 1050	900 x 1200	1050 x 1200	1200 x 1200	1400 x 1200	1600 x 1200	1800 x 1200	2000 x 1200
Product Number	Galvanised	Tri Head	2500	2510	2520	2530	2540	2550	2560	2570	2580	2590
		Lucy Type	2501	2511	2521	2531	2541	2551	2561	2571	2581	2591
		Anti Vandal	2504	2514	2524	2534	2544	2554	2564	2574	2584	2594
	Painted Grey 18B25	Tri Head	2502	2512	2522	2532	2542	2552	2562	2572	2582	2592
		Lucy Type	2503	2513	2523	2533	2543	2553	2563	2573	2583	2593
		Anti Vandal	2506	2516	2526	2536	2546	2556	2566	2576	2586	2596
	Painted Black 00E53	Tri Head	2500BL	2510BL	2520BL	2530BL	2540BL	2550BL	2560BL	2570BL	2580BL	2590BL
		Lucy Type	2501BL	2511BL	2521BL	2531BL	2541BL	2551BL	2561BL	2571BL	2581BL	2591BL
		Anti Vandal	2504BL	2514BL	2524BL	2534BL	2544BL	2554BL	2564BL	2574BL	2584BL	2594BL
Specification	Max Internal Depth mm		290	290	290	390	390	390	390	390	390	390
	Min Internal Depth* mm		240	240	240	340	340	340	340	340	340	340
	External Width mm		545	645	795	945	1095	1245	1445	1645	1845	2045
	External Height mm		1130	1230	1380	1530	1550	1550	1550	1550	1550	1550
	External Depth mm		375	375	375	475	475	475	475	475	475	475
	Root Depth mm		410	410	410	410	410	410	410	410	410	410
	Aperture Dimensions mm (W x H)		375 x 800	475 x 900	625 x 1050	775 x 1200	925 x 1200	1075 x 1200	1275 x 1200	1475 x 1200	1675 x 1200	1875 x 1200
	Nom Weight (Kg)		156	195	208	235	255	270	294	320	484	590

# 3mm

# Stainless Steel

**2600 Series Stainless Steel -** This series of feeder pillars are an all welded construction using 3mm 304 graded stainless steel. They are suitable for all situations but are particularly useful in challenging service conditions where there is a high risk of corrosion.

These pillars **come painted as standard**, with a full range of colour options available. Alternatively, we can produce brushed, satin or mirror-finished pillars to suit any street scene.

			Single Door					Double Door						
Nominal Backboard Dimensions mm (W x H)			300 X 600	400 x 700	500 x 800	600 x 900	750 x 1050	900 x 1200	1050 x 1200	1200 x 1200	1400 x 1200	1600 x 1200	1800 x 1200	2000 x 1200
Specification	Painted Grey 18B25	Tri Head	2600	2610	2620	2630	2640	2650	2660	2670	2675	2680	2685	2690
		Lucy Type	2601	2611	2621	2631	2641	2651	2661	2671	2676	2681	2686	2691
		Anti Vandal	2602	2612	2622	2632	2642	2652	2662	2672	2677	2682	2687	2692
	Brushed Finish	Tri Head	2600BR	2610BR	2620BR	2630BR	2640BR	2650BR	2660BR	2670BR	2675BR	2680BR	2685BR	2690BR
		Lucy Type	2601BR	2611BR	2621BR	2631BR	2641BR	2651BR	2661BR	2671BR	2676BR	2681BR	2686BR	2691BR
		Anti Vandal	2602BR	2612BR	2622BR	2632BR	2642BR	2652BR	2662BR	2672BR	2677BR	2682BR	2687BR	2692BR
Product Number	Max Internal Depth mm		170	190	220	260	260	320	320	320	320	320	320	320
	External Width mm		350	450	550	650	800	1050	1200	1350	1550	1750	1950	2150
	External Height mm		830	930	1030	1130	1280	1470	1470	1470	1470	1470	1470	1470
	External Depth mm		215	235	265	305	305	450	450	450	450	450	450	450
	Root Depth mm		300	300	300	300	300	400	400	400	400	400	400	400
	Aperture Dimensions mm (W x H)		250 x 600	350 x 700	450 x 800	550 x 900	700 x 1050	850 x 1200	1000 x 1200	1150 x 1200	1350 x 1200	1550 x 1200	1750 x 1200	1950 x 1200

## Features:

- 304 Graded Stainless Steel
- Painted grey 18B25 as standard
- Precision lasered
- Fully accessible door aperture
- Stainless steel locks
- Bolt on root
- Quality phosphor bronze hinges
- Design to ingress protection IP54
- Water tight gasket door seal to IP65
- In built ventilation system
- Document pocket
- Fitted warning signs
- Earth fly lead
- 12mm treated backboard



## Heritage Range

These classic feeder pillars are made to the same dimensions as our 2300, 2500 and 2600 pillars, but with subtle enhancements to provide a positive contribution to the environment. They are supplied painted to any RAL or BS number. They are protected prior to painting by hot dip galvanising to BS EN ISO 1461.

Simply choose the dimensions you require from our 2300, 2500 or 2600 range and specify Heritage and the colour you require.

\* Gold inlay not standard



## Heritage Pillars



### Heritage Market Trader Mini Pillar

Perfect to maintain the aesthetics of the surroundings



# Ali Wall Boxes



**Aluminium Wall Boxes -** A combined wall box & bracket with clean lines to blend in with new or existing architecture. They are constructed to IP44 from heavy gauge aluminium with heavy gauge arms of 34mm or 42mm diameter. The body is designed for ease of working with full width access, the deep sided door being secured by a stainless steel tri-headed screw locating into a stainless steel bush.

Finish is grey and the boxes are also available with fitted back plates suitable for pole mounting.

Arm Diameter (mm)	Arm Length (mm)	Internal (mm)			External (mm)			Part without Backplate	Part with Backplate
		Width	Height	Depth	Width	Height	Depth		
34	1000	160	470	100	190	620	130	1086	1088
42	300							1083	1081
42	500							1084	1082
42	1000							1085	1087
34	300	160	350	100	190	500	130	1076	1073
34	500							1077	1078
42	300							1074	1071
42	500							1075	1072
34	300	115	280	80	145	400	100	1065	1069
34	500							1064	1068
42	300							1063	1067
42	500							1062	1066

# Recessed Wall Boxes



**Recessed Wall Boxes -** These service boxes are constructed from 3mm mild steel galvanised to BS EN ISO 1461. They are of an all welded construction to IP44 with roust hinges and a choice of locks. The units are designed to be built into standard brick or block constructions as well as poured concrete and are ideal for subways, tunnels and bridges - for single or multiple services.

Nominal Backboard Dimensions mm (W x H)	180 x 380	380 x 380	380 x 600
Part Number - Tri Head Locks	2800	2810	2820
Part Number - Anti Vandal Locks	2801	2811	2821
Internal Width	200	410	410
Internal Height	410	410	620
Internal Depth	130	130	130
External Width	310	520	520
External Height	520	520	730
External Depth	150	150	150
Min Aperture in Wall	210 x 420	420 x 420	420 x 630

\* Bespoke solution with cable access door

# GRP Boxes

**Universal IP65 Cut Out Service Boxes** - These superbly built and finished boxes are constructed from heavy gauge fire retardant G.R.P. they are rust proof, U.V. stabilised & impact resistant. The doors are hung on stainless steel hinge pins and fitted with tri-head locks latching onto built-in lock plates. A foam 'O' seal is fitted into a pre-formed recess to form a dust proof door seal. Each door has a pre-formed danger warning sign and notice on the outside, complying to BS 5378.

Internal Width	Internal Height	Internal Depth	Hole Configurations	Part without Backplate	Part with Backplate
220mm	320mm	120mm	Undrilled	1510	1500
			1 x 20mm hole in the top & 1 x 20mm hole in bottom	1511	1501
			1 x 20mm hole in bottom	1512	1502
			2 x 20mm holes in bottom	1513	1503
170mm	220mm	90mm	Undrilled	1410	1400
			1 x 20mm hole in the top & 1 x 20mm hole in bottom	1411	401
			1 x 20mm hole in bottom	1412	1402
			2 x 20mm holes in bottom	1413	1403
Backplate				6501	
Tri Head Key				6062	

**Combined GRP & Bracket** - These are a combined GRP IP65 Service box coupled directly to one of our universal pole and wall brackets. This will allow you to pre-assemble the box and bracket and avoid unnecessary delays on site.

Internal Width	Internal Height	Internal Depth	Hole Configuration	Arm Diameter	Outreach	Uplift	Part Number
170mm	220mm	90mm	1 x 20mm hole in the top & 1 x 20mm in the bottom	34mm	500	5 degrees	1036
					750		1037
					1000		1038
				42mm	500		1039
					750		1040
					1000		1041
Tri Head Key				6062			
Connection Kit C/W Earth Tag				6062			

## Features:

- GRP Box painting optional
- Can be pole, wall or corner mounted
- Swivel arm action to allow various arm orientations
- Double bracket version for higher bracket arms
- Easy to wire and to install
- The bracket arm is earthed directly within the box
- Facility for banding onto poles
- Galvanised to BS EN ISO 1461:2009



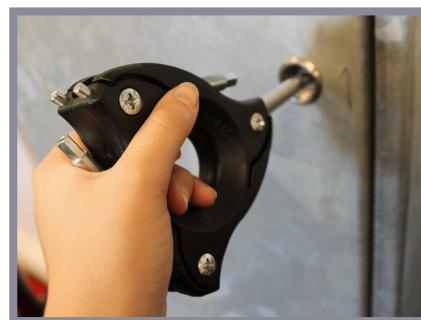


**Prewired & Bespoke Solutions -** Save time and hassle with prewired panels and prewired pillars, designed for minimal wire exposure and optimum use of all available space, delivered ready to install. Our engineering team are able to undertake the design and building of prewired distribution panels of almost any size to your specification.

# Prewired Solutions



# Traffic Keys



For our full range of traffic keys please visit [www.pudseydiamond.com/keys](http://www.pudseydiamond.com/keys)

## Contact Us

For enquiries or further information please contact:

Address: Pudsey Diamond Engineering Ltd.  
Mitchell Close  
West Portway Industrial Estate  
Andover  
Hampshire  
SP10 3TJ  
United Kingdom

Phone: +44 (0)1264 33 66 77

Email: [sales@pudseydiamond.com](mailto:sales@pudseydiamond.com)

© 2021 Pudsey Diamond Engineering Ltd. All rights reserved. This document or any part thereof may not be reproduced, stored in a retrieval system or transmitted in any way without written permission from Pudsey Diamond Engineering Ltd.

